

boe
~ living the change ~





boe



„Die Gemeinschaft ist für mich wie eine zweite Familie“ Felix (19)



Junge Erwachsene

„Wenn ich ein Problem habe, kann ich mich immer auf alle anderen verlassen.“ Peter (42)

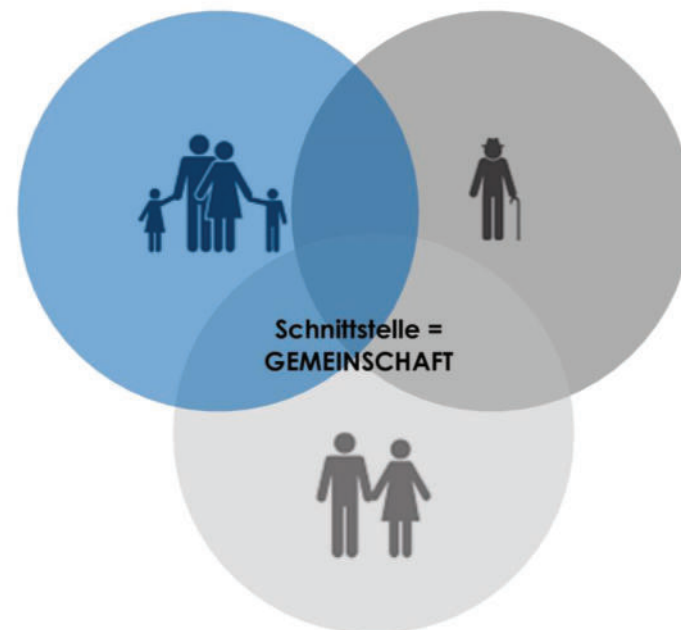


Familien

„Ich habe im Alter von 65 nochmal neu angefangen. Das war die beste Entscheidung meines Lebens“ Heike

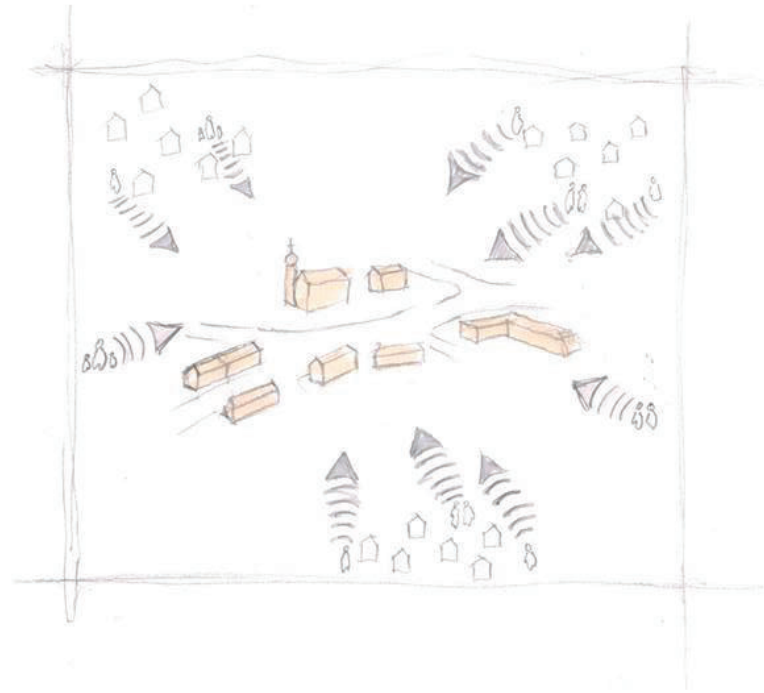


Senioren



... Mehrgenerationenwohnen





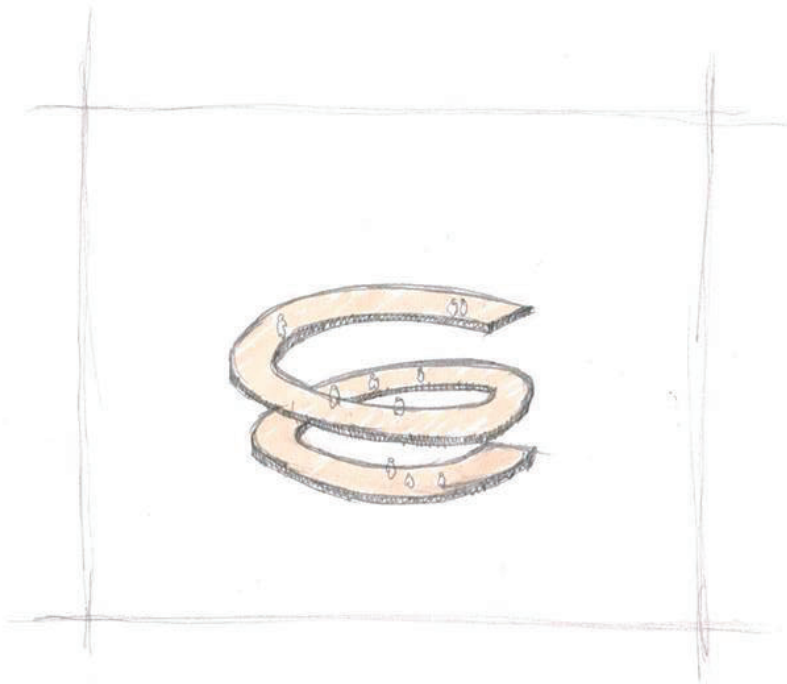


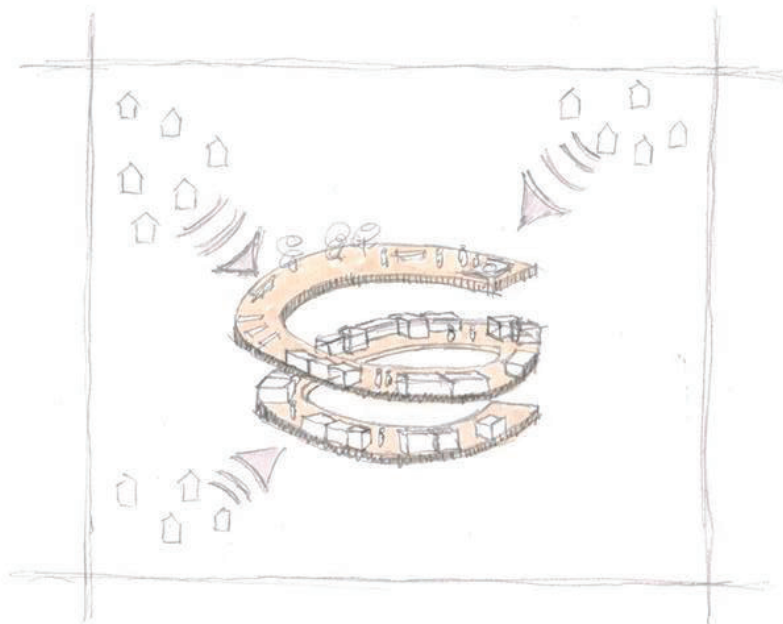
Gemeinschaft

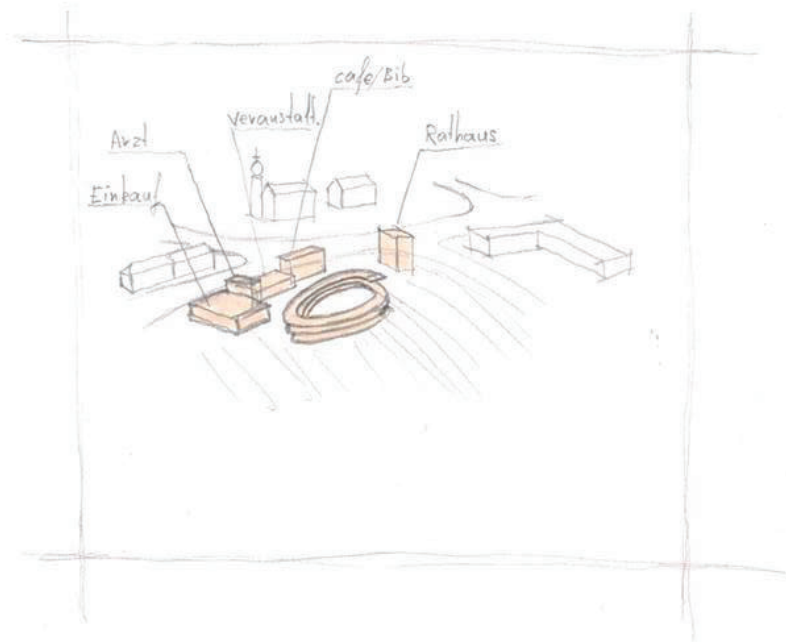


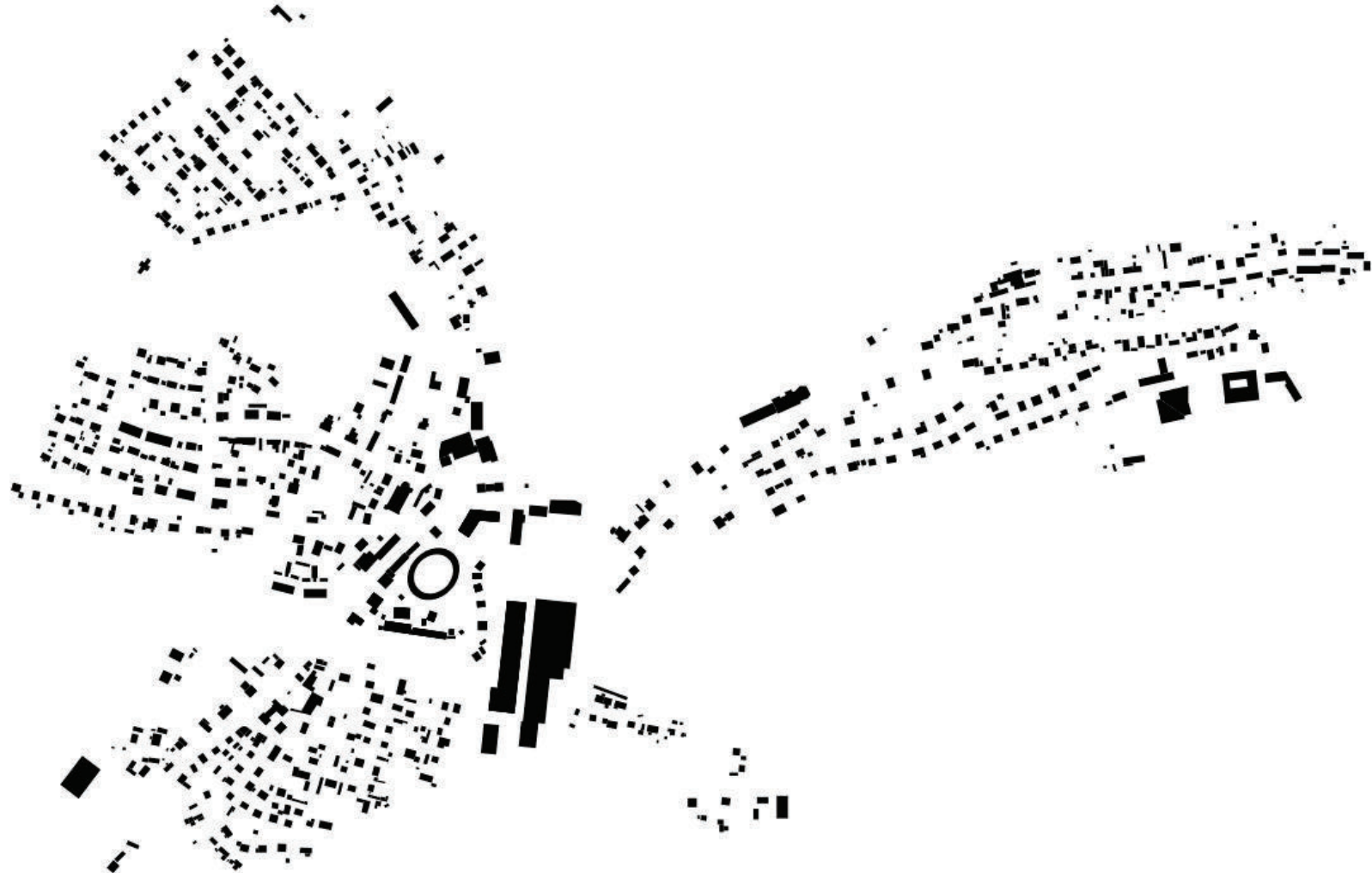
Gemeinschaft

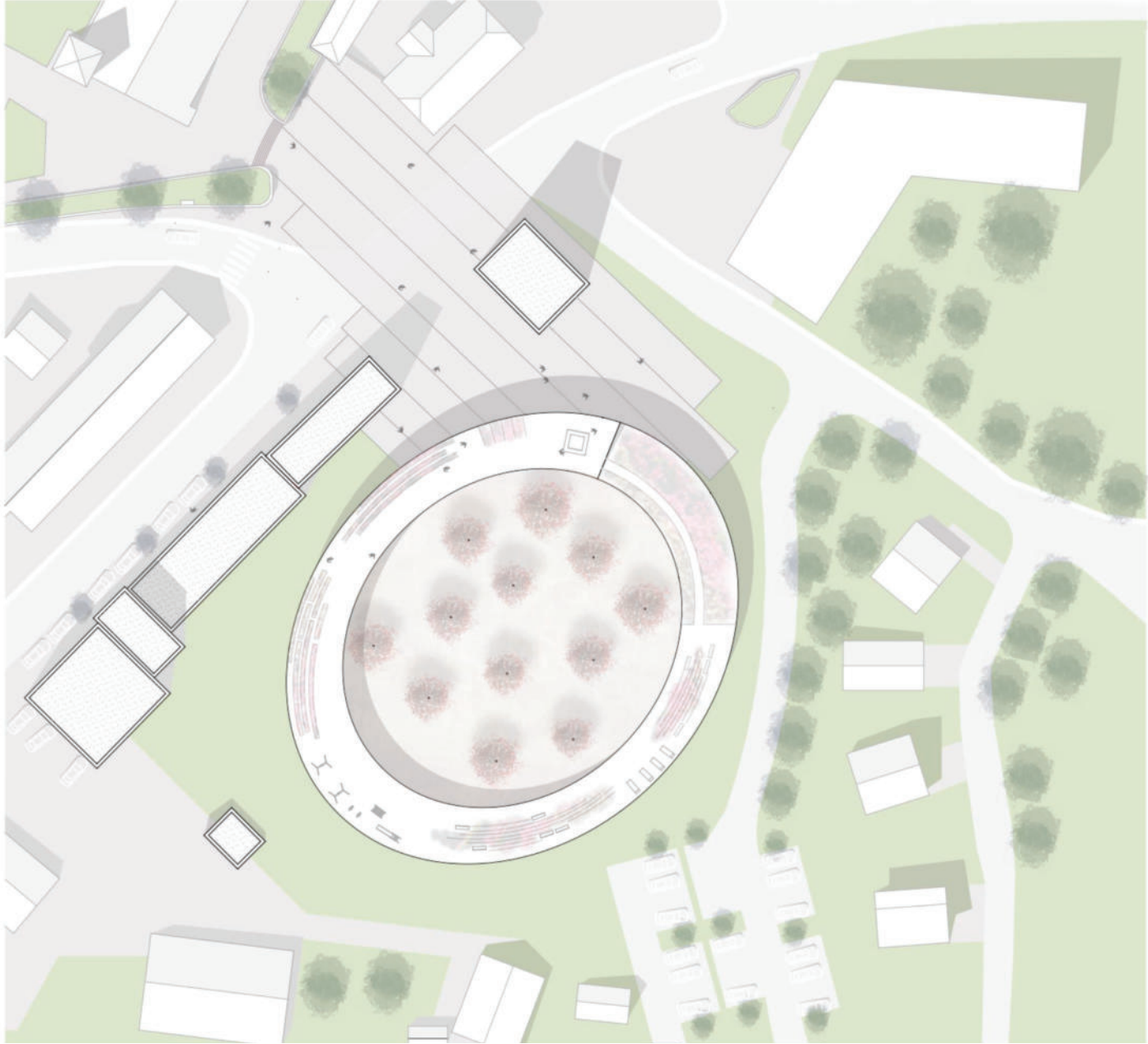




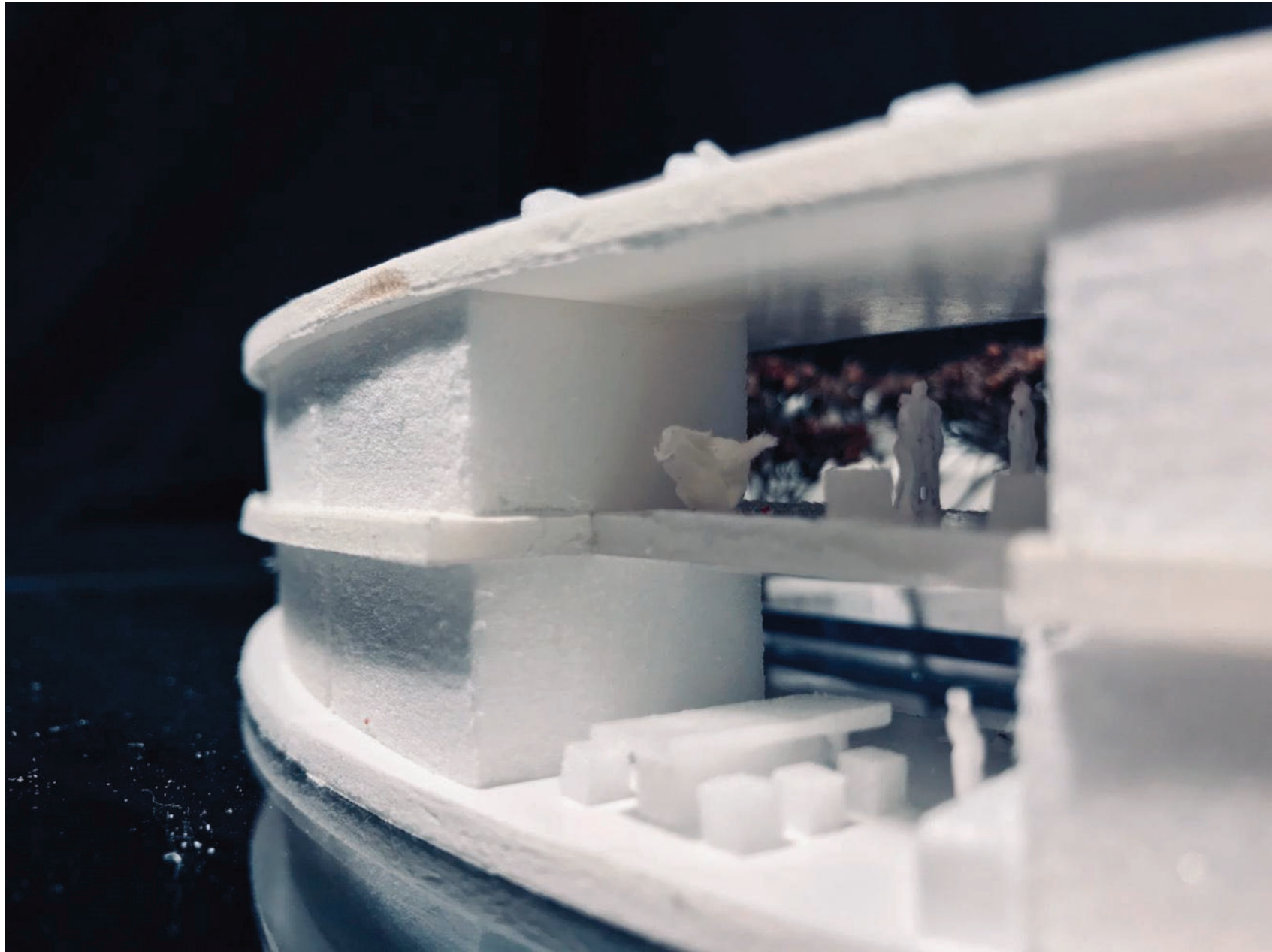


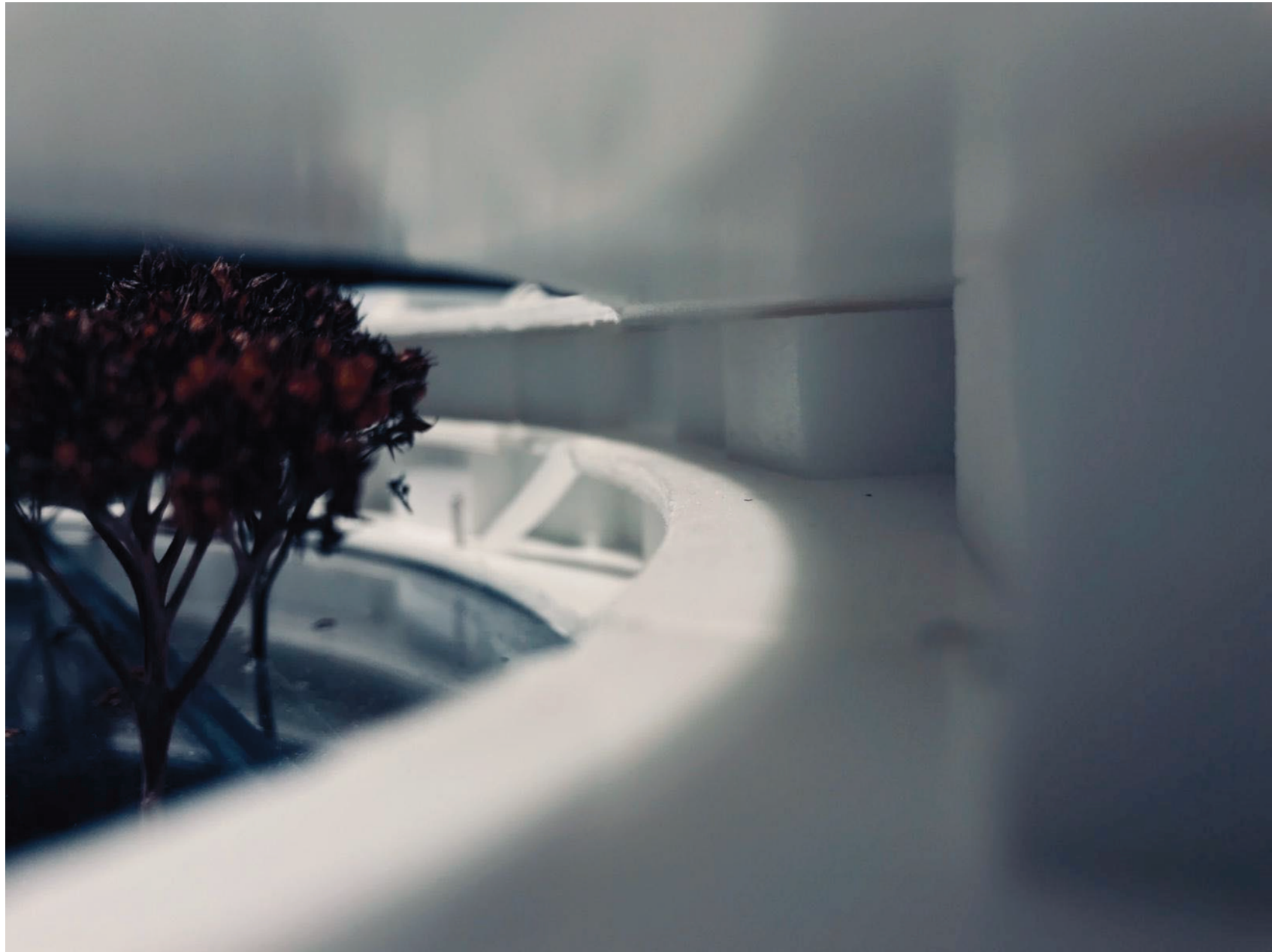


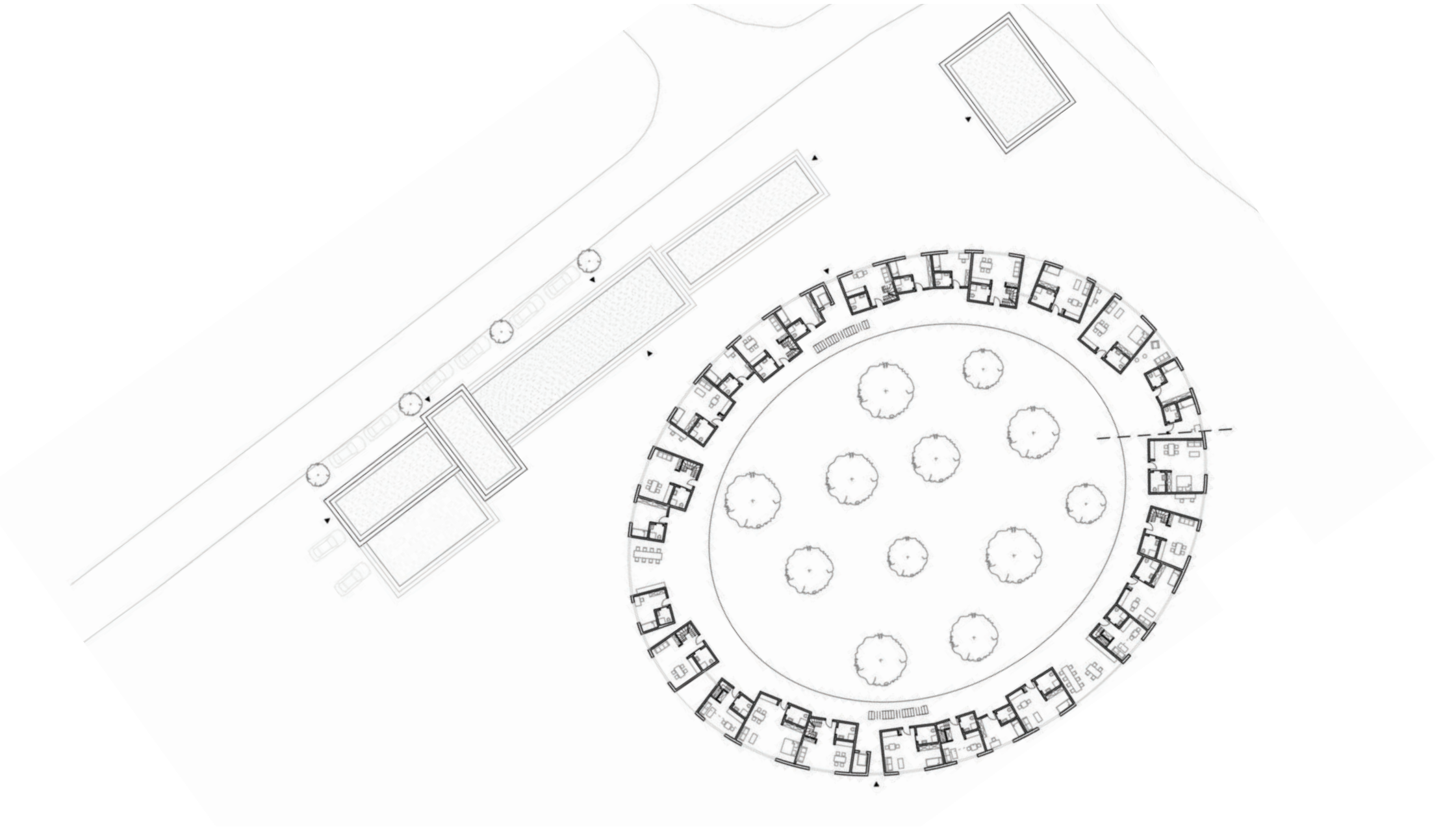


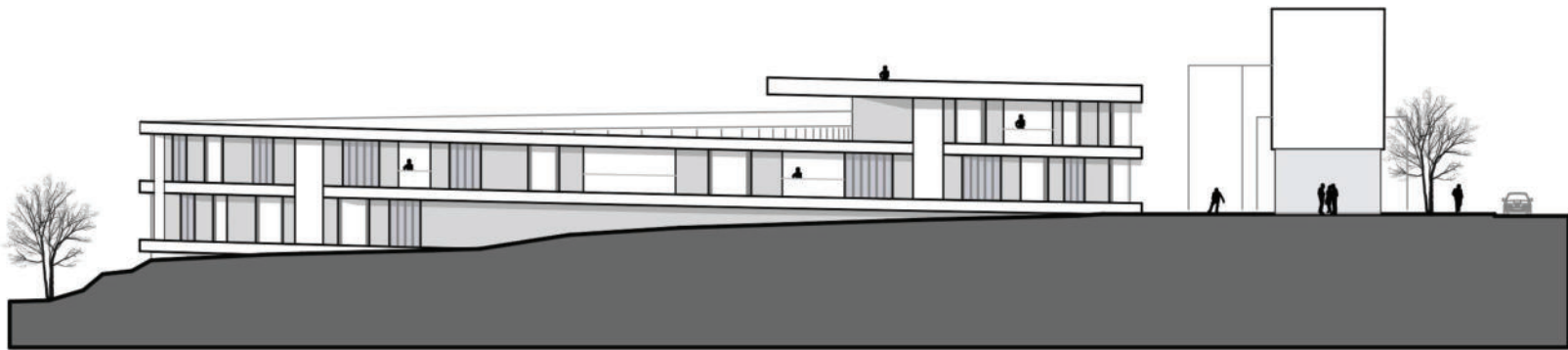
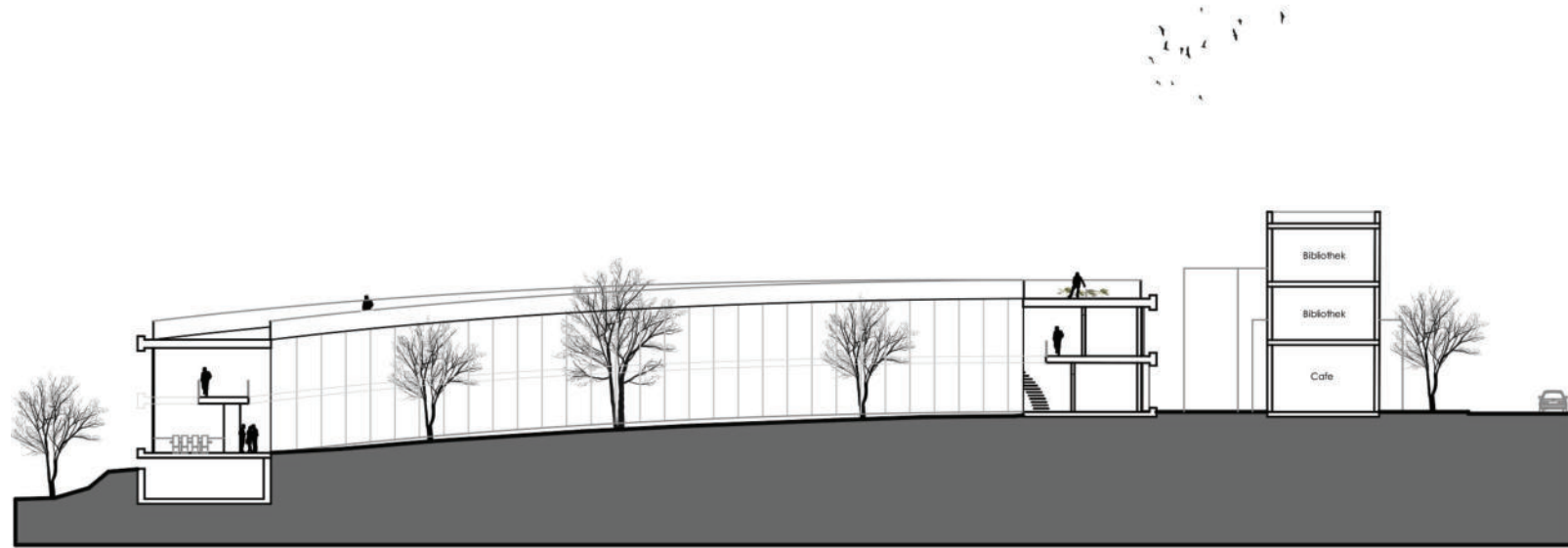


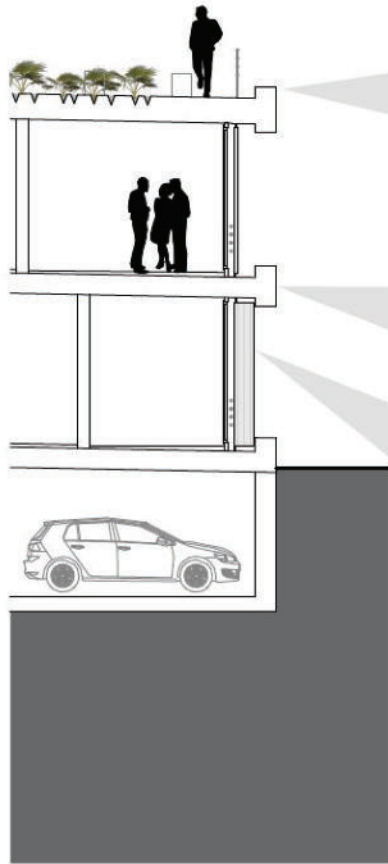












Fassadenschnitt



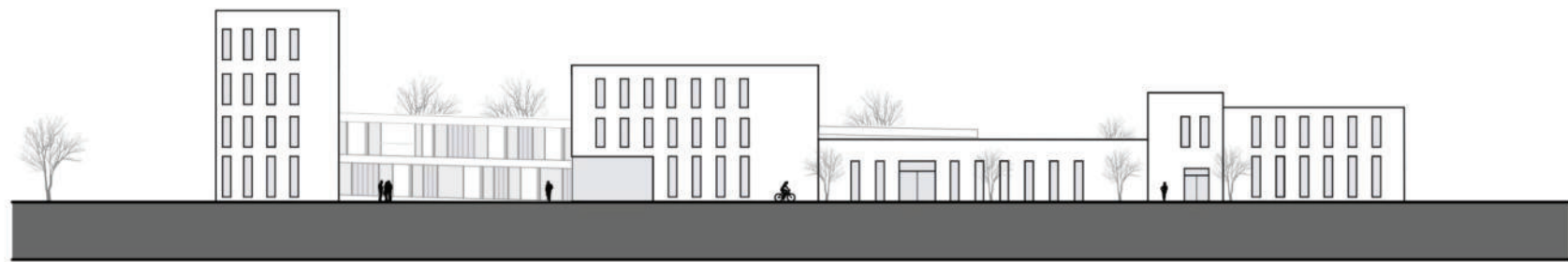
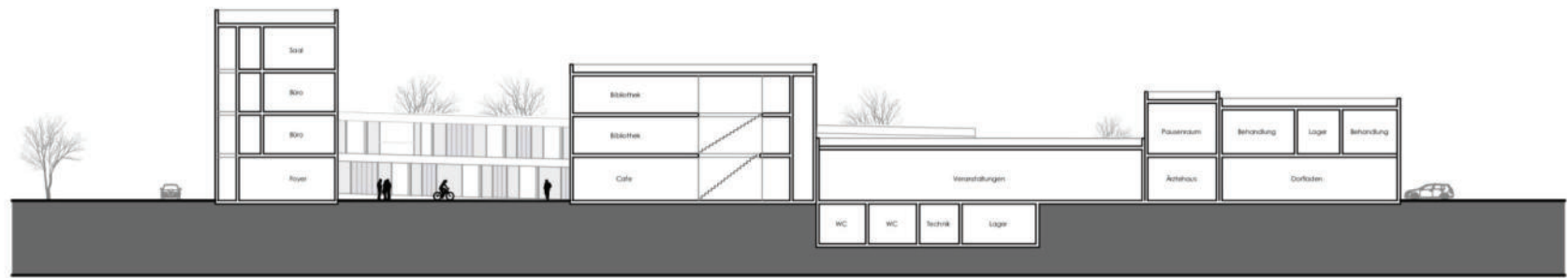
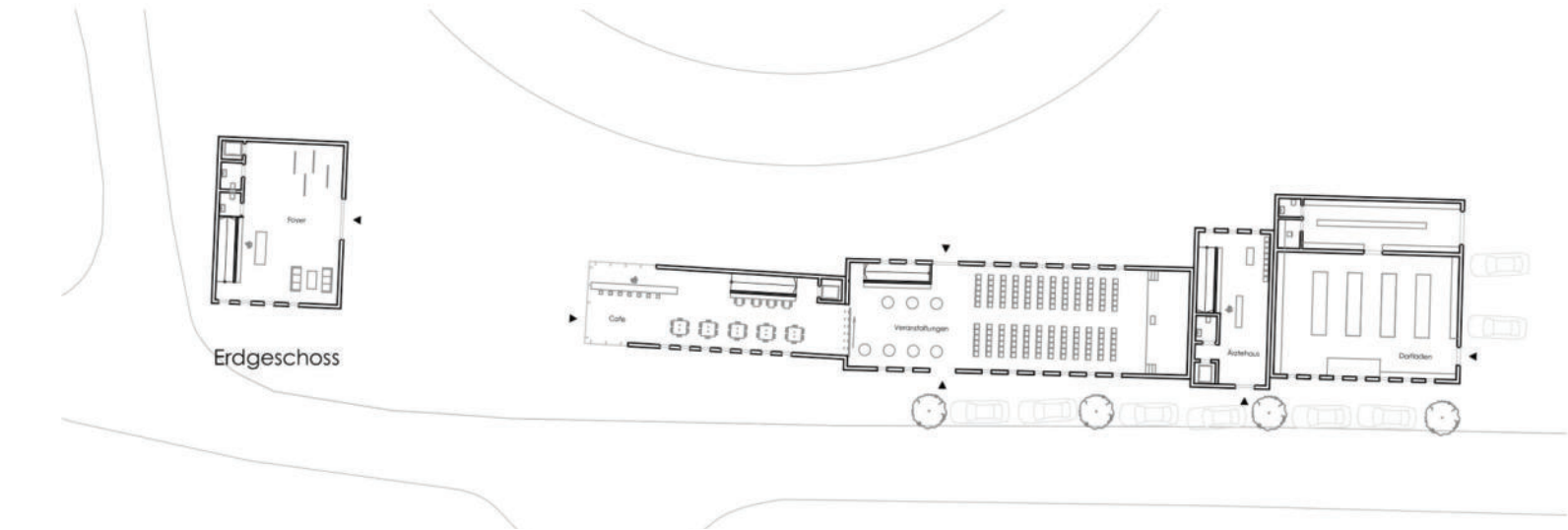
Dachbegrünung



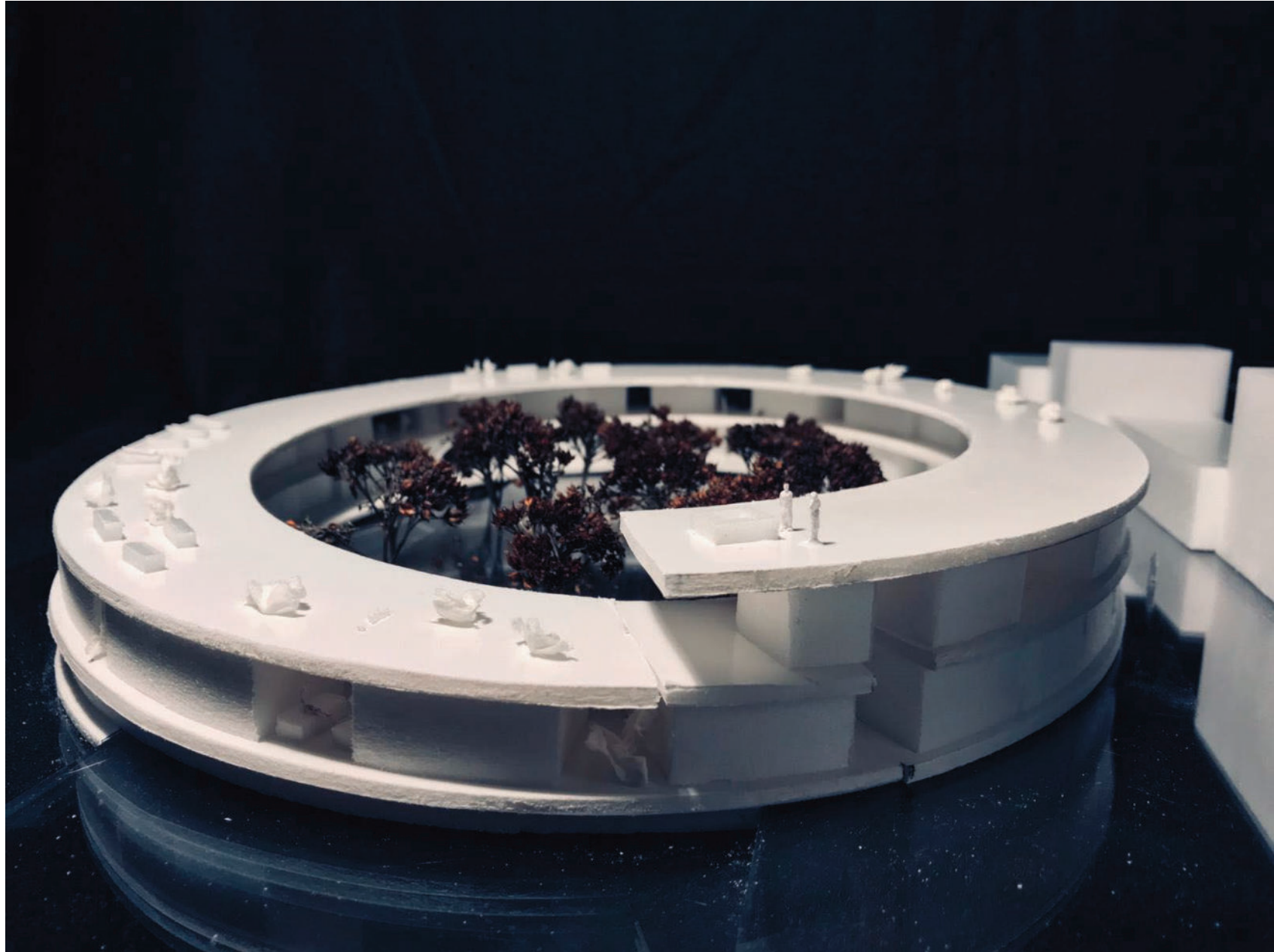
Spirale



Verschattung







Rathaus

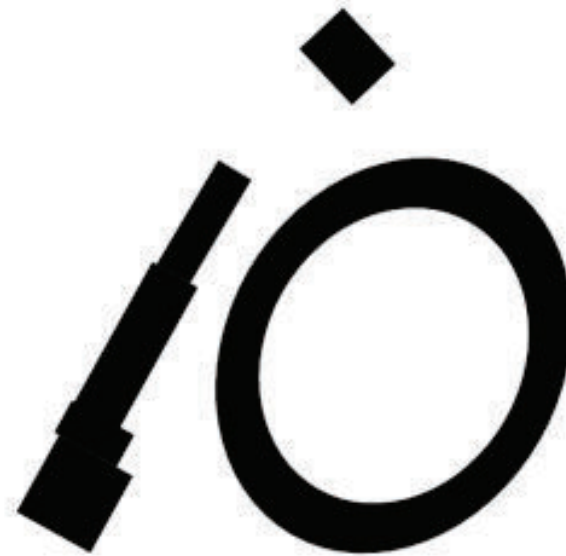
4 Geschosse

600 m² Nutzfläche

Riegel

5 Verschiedene Nutzungsarten

1198 m² Nutzfläche



Wohnen

45 Wohneinheiten

75 Personen

2.124 m² Wohnfläche

Reinertrag	71.000€
Gesamtinvestitionskosten	11.849.000€
Rendite	3,9%
Eigenkapitalrendite	9,7%

A white egg is centered in the frame against a light blue background. The word "boe" is printed in a bold, black, sans-serif font on the side of the egg. A soft shadow is cast to the right of the egg.

boe